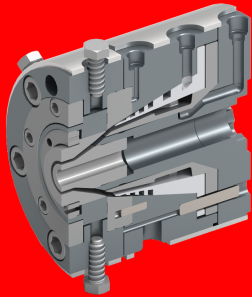


**TEANKA manufactures heads that cover a wide range of market needs.**

With its modern CNC machines and its experienced staff, in addition with the many years of experience, TEANKA manufactures heads from special metals of high standards, for the production of plastic pipes from PE, PP, PVC with diameters from  $\Phi 3$  to  $\Phi 125$  mm.



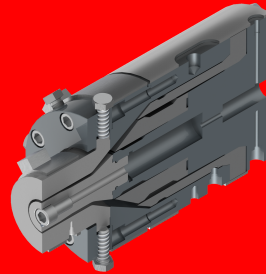
## KC SERIES

The KC series of heads manufactured by TEANKA are crosshead type. They are ideal for the production of single or multilayer pipes. The range of diameters is from 3mm to 40mm.

Ideal heads for drip irrigation applications, as well as complex multi-layer applications with the use of recycled material in an intermediate layer of the pipe.

### Applications

- Pipes for drip irrigation.
- Multi-layer pipes.
- Pipes from recycled material.
- Pipes for agricultural use.
- Pipes for drinking water use.
- Foam insulation coating.
- Pipe coating.
- Cable coating.



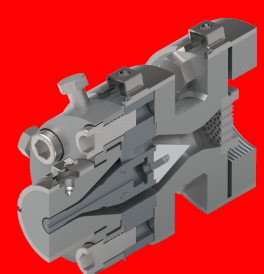
## KL SERIES

The KL series of heads are for the production of single or multi-layer pipes.

They are ideal heads for pipe production up to 125mm.

### Applications

- Multi-layer pipes.
- Pipes from recycled material.
- Pipes for agricultural use.
- Pipes for drinking water use.



## KP SERIES

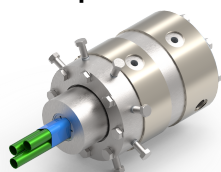
The KP series of heads have special design and construction materials for the production of hard PVC pipe.

Ideal heads for pipe production up to 75mm.

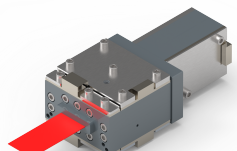
### Applications

- Pipes for hydraulic applications.

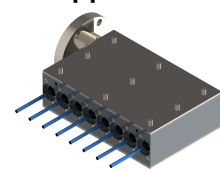
Our company also manufactures special heads according to the customer's requirements. TEANKA engineers can provide consulting and technical support at every step of the application design.



Triple - pipe linear head



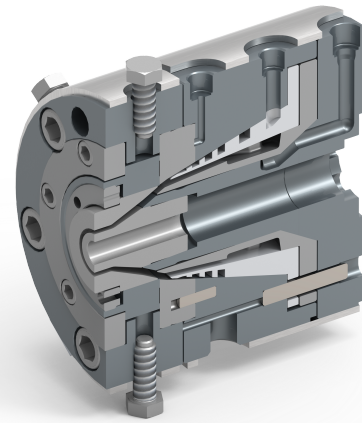
Head for film preparation for laboratory



Production heads for multiple pipes

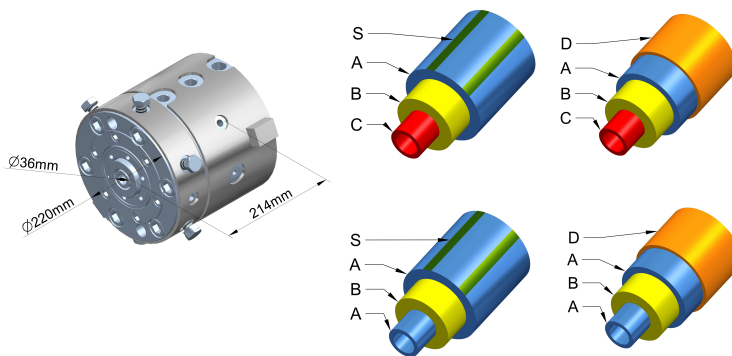
# Extrusion Cross Heads

**CROSSHEAD** type heads are widely used in drip irrigation systems, hydraulic and agricultural pipes, pipe coating and etc. They have great flexibility in layers designing of the pipe and very high accuracy in the uniformity of the layers.



Cross Head

## KC-ABC-S-36



Layer A [%]	Layer B [%]	Layer C [%]	Layer D [%]	Stripes [kg/h]	Total thickness [mm]
5 - 20	60 - 90	5 - 20	5 - 15	3	0.1 - 3.5
10 - 35	30 - 80	10 - 35	5 - 15	3	0.1 - 3.5

Heads for the production of three or four layers pipes with an intermediate main layer + stripes, with the ability of providing an inner and outer layer from the same extruder. Also ideal for drip irrigation pipe production by using recycled plastic.

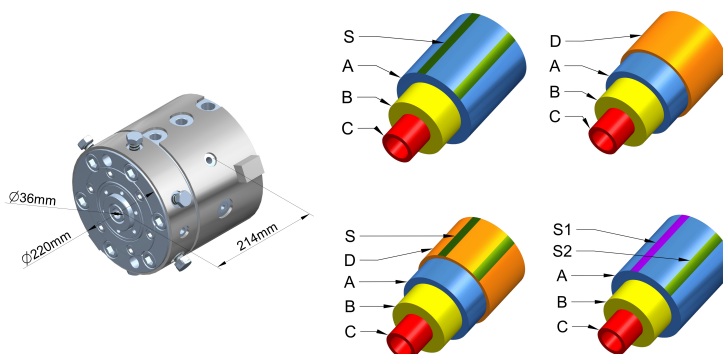
**Extruders: 2 - 4**

**Pipes [mm]: Ø3 - Ø32**

**Max. production [kg/h]: 450**

**Production material: •PE •PP •PVC Soft**  
**Head construction material: Improved steel 1.8550, deeply nitrated till 0.4 mm**

## KC-ABC-XS-36



Layer A [%]	Layer B [%]	Layer C [%]	Layer D [%]	Stripes [kg/h]	Total thickness [mm]
5 - 20	60 - 90	5 - 20	5 - 15	3	0.1 - 3.5
10 - 35	30 - 80	10 - 35	5 - 15	3	0.1 - 3.5

Special Heads for the production of three or four layer pipes with different stripes. Ideal for production of drip irrigation pipes.

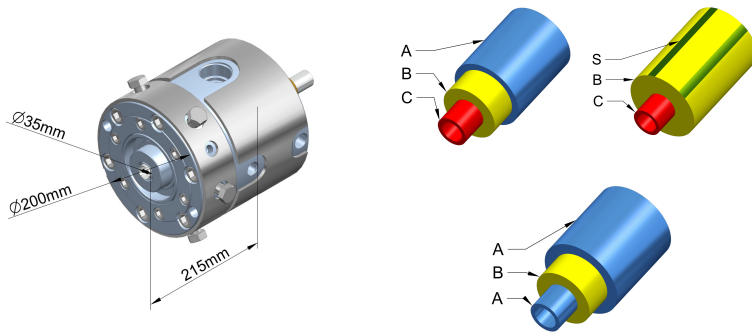
**Extruders: 4 - 6**

**Pipes [mm]: Ø3 - Ø32**

**Max. production [kg/h]: 450**

**Production material: •PE •PP •PVC Soft**  
**Head construction material: Improved steel 1.8550, deeply nitrated till 0.4mm**

**KC-ABC-OS-36**



Layer A [%]	Layer B [%]	Layer C [%]	Layer D [%]	Stripes [kg/h]	Total thickness [mm]
5 - 15	60 - 90	5 - 20	5 - 15	3	0.1 - 3.5
10 - 35	30 - 80	10 - 35	5 - 15	3	0.1 - 3.5

Heads for the production of three-layer pipes with intermediate main layer or two-layer pipes with stripes. Ability of providing an inner and outer layer from the same extruder. Ideal for drip irrigation pipe production.

**Extruders: 2 - 3**

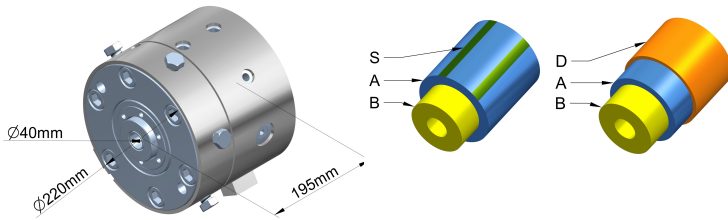
**Pipes [mm]: Ø3 - Ø32**

**Max. production [kg/h]: 450**

**Production material: •PE •PP •PVC Soft**

**Head construction material: Improved steel 1.8550, deeply nitrated till 0.4mm**

**KC-AB0-S-41**



Layer A [%]	Layer B [%]	Layer C [%]	Layer D [%]	Stripes [kg/h]	Total thickness [mm]
5 - 15	70 - 95	-	5 - 15	3	0.1 - 3.5
10 - 30	55 - 90		5 - 15	3	0.1 - 3.5

Heads for the production of three-layer pipes with intermediate main layer or two-layer pipes with stripes. Ability of providing an inner and outer layer from the same extruder. Ideal for drip irrigation pipe production.

**Extruders: 3**

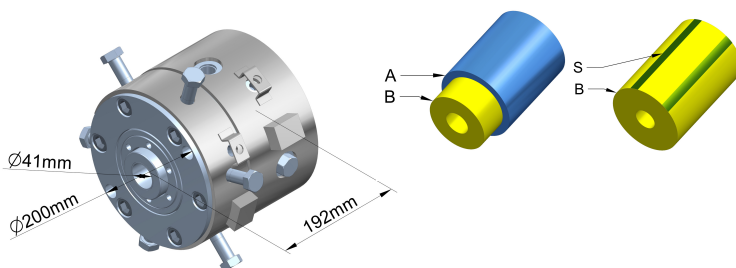
**Pipes [mm]: Ø3 - Ø32**

**Max. production [kg/h]: 450**

**Production material: •PE •PP •PVC Soft**

**Head construction material: Improved steel 1.8550, deeply nitrated till 0.4mm**

**KC-AB0-OS-41**



Layer A [%]	Layer B [%]	Layer C [%]	Layer D [%]	Stripes [kg/h]	Total thickness [mm]
5 - 15	100	-	-	3	0.1 - 3.5

Heads for the production of a double-layer pipes with inner main layer or a single-layer tubes with lines. Ideal for drip irrigation pipe production.

**Extruders: 2**

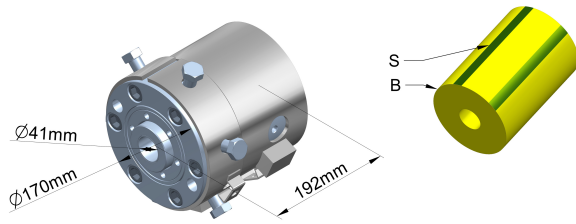
**Pipes [mm]: Ø3 - Ø32**

**Max. production [kg/h]: 450**

**Production material: •PE •PP •PVC Soft**

**Head construction material: Improved steel 1.8550, deeply nitrated till 0.4mm**

**KC-0B0-S-41**



Layer A [%]	Layer B [%]	Layer C [%]	Layer D [%]	Stripes [kg/h]	Total thickness [mm]
-	100	-	-	3	0.1 - 3.5

Heads for the production of single-layer pipes with stripes. Ideal for drip irrigation pipe production.

**Extruders: 1 - 2**

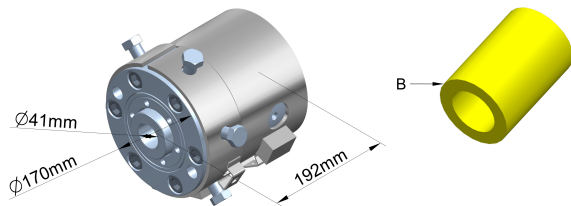
**Pipes [mm]: Ø3 - Ø32**

**Max. production [kg/h]: 450**

**Production material: •PE •PP •PVC Soft**

**Head construction material: Improved steel 1.8550, deeply nitrated till 0.4mm**

**KC-0B0-41**



Layer A [%]	Layer B [%]	Layer C [%]	Layer D [%]	Stripes [kg/h]	Total thickness [mm]
-	100	-	-	-	0.1 - 3.5

Heads for the production of three-layer pipe with intermediate main layer or two-layer pipes with stripes. Ability of providing an inner and outer layer from the same extruder. Ideal for drip irrigation pipe production.

**Extruders: 3**

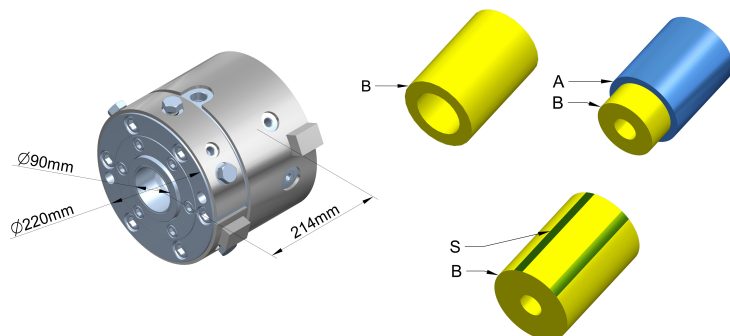
**Pipes [mm]: Ø3 - Ø32**

**Max. production [kg/h]: 450**

**Production material: •PE •PP •PVC Soft**

**Head construction material: Improved steel 1.8550, deeply nitrated till 0.4mm**

**KC-0B0-S-70**



Layer A [%]	Layer B [%]	Layer C [%]	Layer D [%]	Stripes [kg/h]	Total thickness [mm]
5 - 15	85 - 95	-	-	3	0.1 - 2

Heads for the production of single or double layer coating films or pipes. Ideal for coated pipes, cables, foam and etc.

**Extruders: 1 - 2**

**Pipes [mm]: Ø3 - Ø63**

**Max. production [kg/h]: 200**

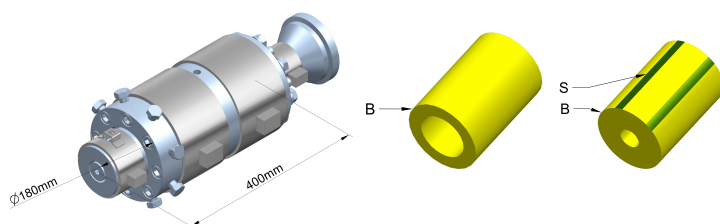
**Production material: •PE •PP •PVC Soft**

**Head construction material: Improved steel 1.8550, deeply nitrated till 0.4mm**



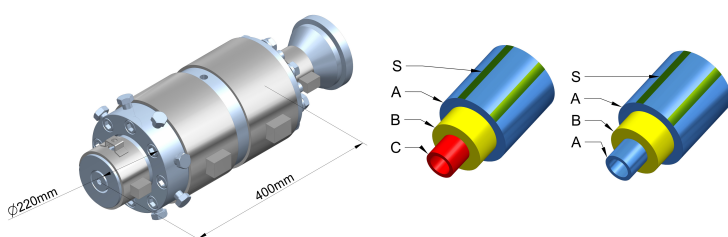
# Extrusion Simple Heads

## KL-OB0-50



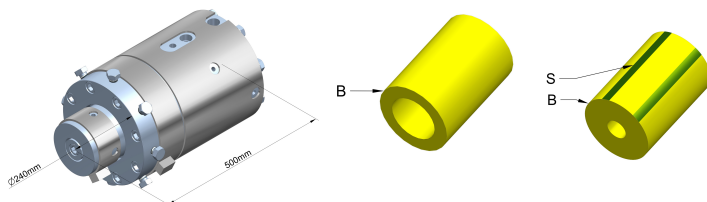
Layer A [%]	Layer B [%]	Layer C [%]	Layer D [%]	Stripes [kg/h]	Total thickness [mm]
-	100	-	-	3	0.8 - 7.5

## KL-ABC-50



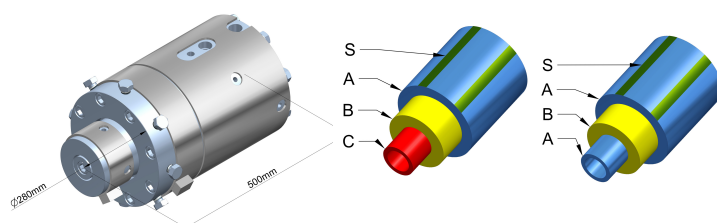
Layer A [%]	Layer B [%]	Layer C [%]	Layer D [%]	Stripes [kg/h]	Total thickness [mm]
5 - 25	55 - 90	5 - 20	-	3	0.8 - 7.5

## KL-OB0-110



Layer A [%]	Layer B [%]	Layer C [%]	Layer D [%]	Stripes [kg/h]	Total thickness [mm]
-	100	-	-	-	0.8 - 20.0

## KL-ABC-110



Layer A [%]	Layer B [%]	Layer C [%]	Layer D [%]	Stripes [kg/h]	Total thickness [mm]
5 - 15	55 - 90	5 - 20	-	3	1.2 - 20.0

Heads for the production of single-layer pipes with stripes.

**Extruders:** 1 - 2  
**Pipes [mm]:** Ø12 - Ø50  
**Max. production [kg/h]:** 230  
**Production material:** •PE •PP  
**Head construction material:**  
 Improved steel 1.6582 & 1.7225

Heads for the production of a three-layer pipes with an intermediate main layer + stripes. Ability of providing an inner and outer layer from the same extruder.

**Extruders:** 2 - 4  
**Pipes [mm]:** Ø12 - Ø50  
**Max. production [kg/h]:** 230  
**Production material:** •PE •PP  
**Head construction material:**  
 Improved steel 1.6582 & 1.7225

Heads for the production of single-layer pipes with stripes.

**Extruders:** 1 - 2  
**Pipes [mm]:** Ø20 - Ø110  
**Max. production [kg/h]:** 400  
**Production material:** •PE •PP  
**Head construction material:**  
 Improved steel 1.6582 & 1.7225

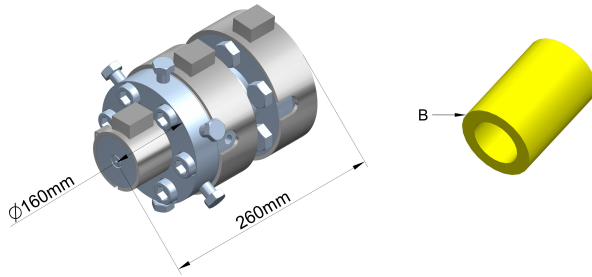
Heads for the production of single or double layer coating films or pipes. Ideal for coated pipes, cables, foam and etc.

**Extruders:** 2 - 4  
**Pipes [mm]:** Ø20 - Ø110  
**Max. production [kg/h]:** 400  
**Production material:** •PE •PP  
**Head construction material:**  
 Improved steel 1.6582 & 1.7225

# Extrusion Heads for Rigid PVC

**TEANKA**  
PLASTICS MACHINERY

## KP-0B0-32



Layer A [%]	Layer B [%]	Layer C [%]	Layer D [%]	Stripes [kg/h]	Total thickness [mm]
-	100	-	-	3	0.5 - 3.5

Heads for single-layer pipe production especially designed for PVC Rigid.

**Extruders: 1**

**Pipes [mm]: Ø10 - Ø32**

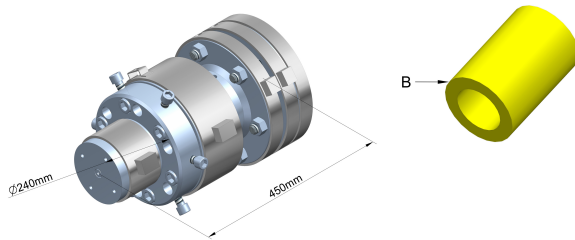
**Max. production [kg/h]: 100**

**Production material: •PVC Rigid**

**Head construction material: UHB**

**Ramax S**

## KC-0B0-75



Layer A [%]	Layer B [%]	Layer C [%]	Layer D [%]	Stripes [kg/h]	Total thickness [mm]
-	100	-	-	-	0.7 - 7.0

Heads for single-layer pipe production especially designed for PVC Rigid.

**Extruders: 1**

**Pipes [mm]: Ø10 - Ø32**


**Max. production [kg/h]: 250**

**Production material: •PVC Rigid**

**Head construction material: UHB**

**Ramax S**

**TEANKA**  
PLASTICS MACHINERY

 Industrial Area of Thessaloniki  
Block 19, Buildings 12-15, 57022, Sindos - Greece

 +30 2310 797 384, +30 2310 796 185

 info@teanka.gr, sales@teanka.gr

 www.teanka.gr

\* All above mentioned for dimensions and characteristics are not binding for TEANKA and are subject to change.

Download this brochure >

